

JACKSONSHAW

# PARC AIR 59

Humble, Texas

3-Buildings | Up to 320,000 SF | Class A Core Industrial



URBAN INDUSTRIAL

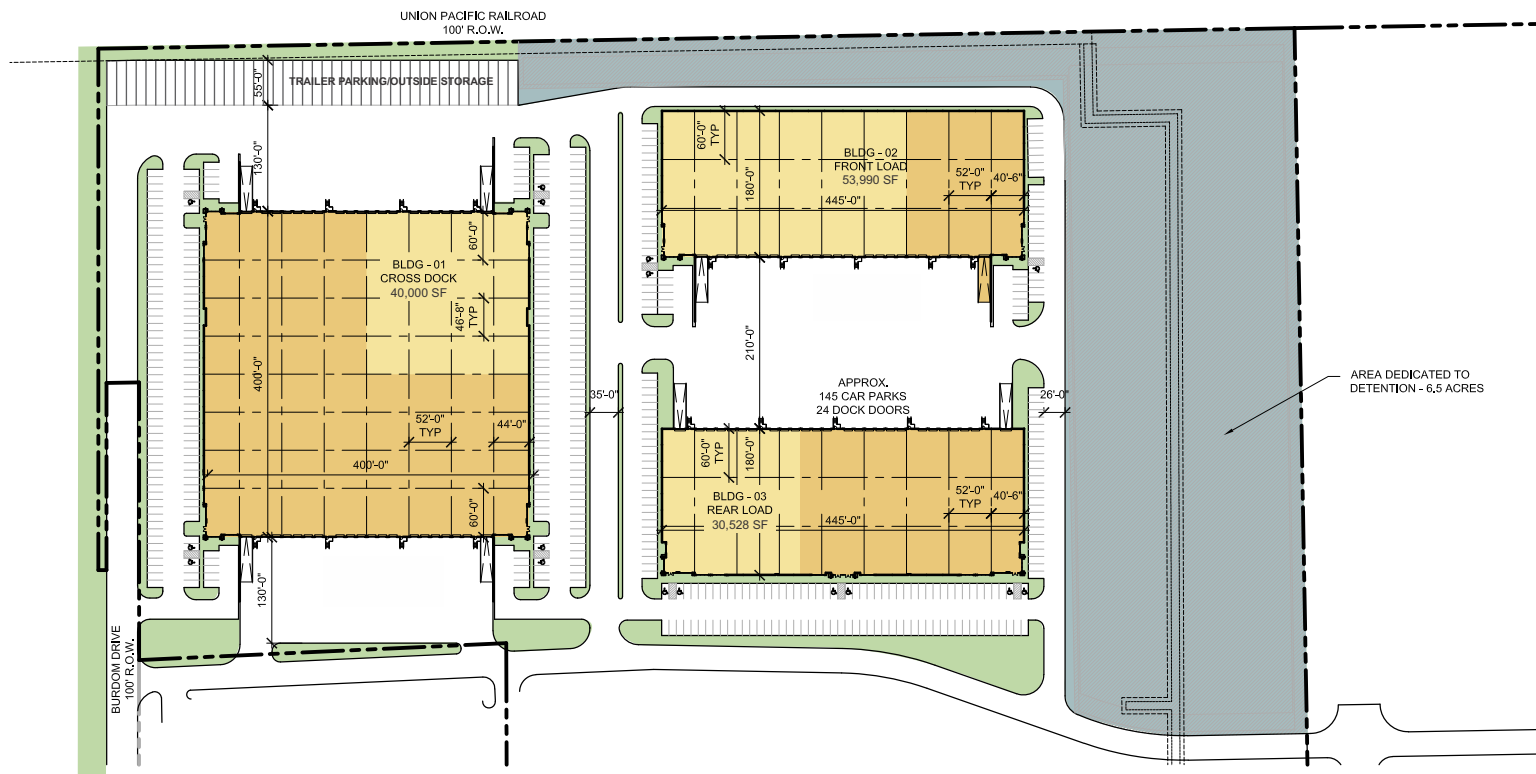
*by Jackson Shaw*

DALLAS | FORT WORTH | HOUSTON | AUSTIN | PHOENIX | LAS VEGAS | WASHINGTON DC | JACKSONVILLE

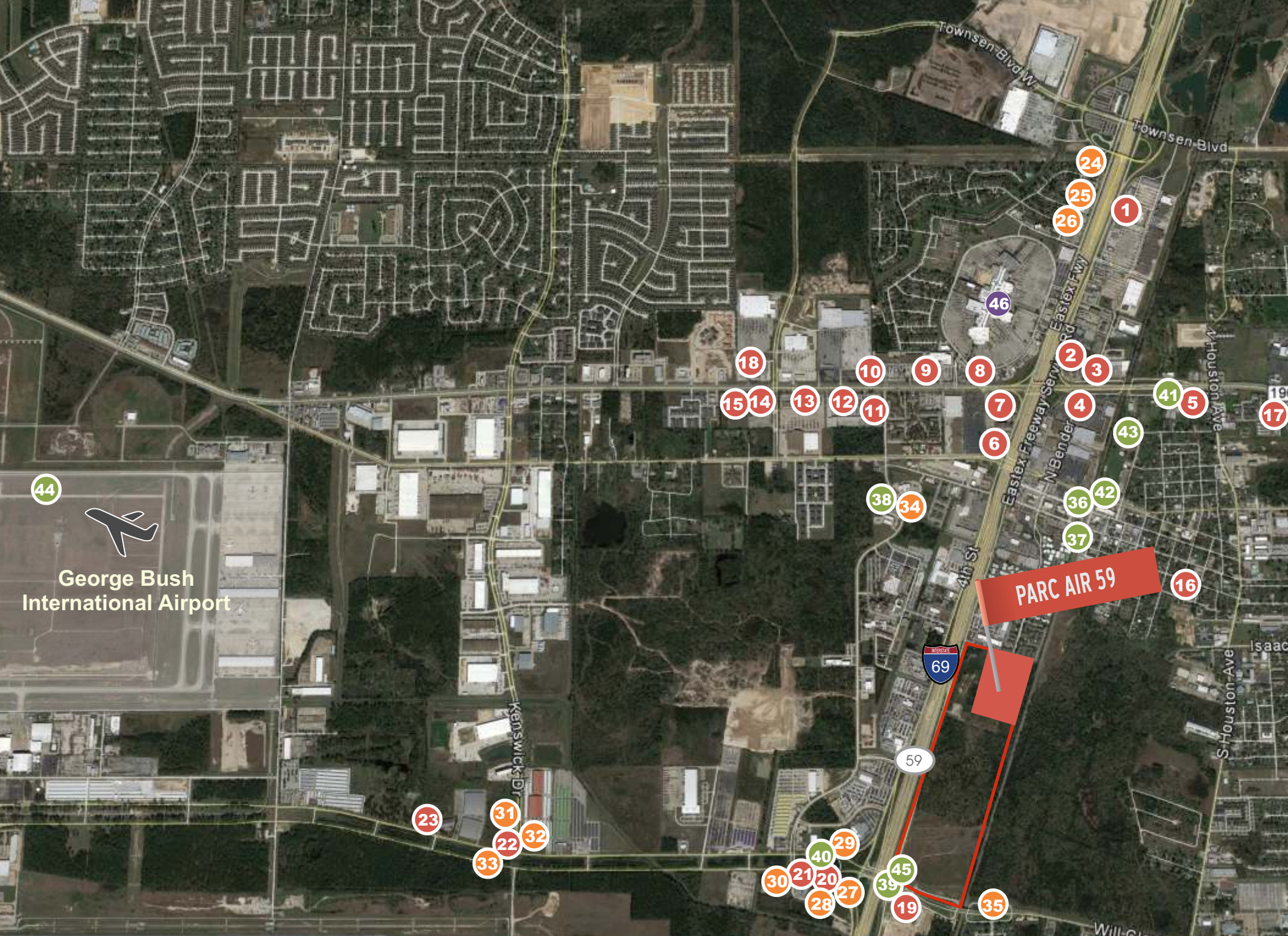




STUDIO SCHAFFER



<b>PARC AIR 59</b>	<b>BLDG. 1</b>	<b>BLDG. 2</b>	<b>BLDG. 3</b>	<b>TOTAL</b>
<b>BUILDING SIZE:</b>	160,000 SF	80,000 SF	80,000 SF	<b>320,000 SF</b>
<b>AVAILABLE SQUARE FEET:</b>	40,000 SF	53,990 SF	30,528 SF	<b>124,518 SF</b>
<b>BUILDING CONFIG:</b>	Cross Dock	Front Load	Rear Load	
<b>DIMENSIONS:</b>	400' long x 400' deep	445' long x 180' deep	445' long x 180' deep	
<b>CLEAR HEIGHT:</b>	32'	28'	28'	
<b>FIRE PROTECTION:</b>	ESFR	ESFR	ESFR	
<b>TRUCK COURT:</b>	130'/185'	210' (shared)	210' (shared)	
<b>DOCK DOORS:</b>	36	21	24	
<b>DRIVE-IN DOORS:</b>	4	2	2	
<b>PARKING SPACES:</b>	236	57	145	
<b>TRAILER PARKING:</b>	42	0	0	



George Bush International Airport

PARC AIR 59



## Restaurants

- 1 Red Lobster
- 2 Chili's
- 3 Souper Salad
- 4 The Curry House
- 5 Domino's Pizza
- 6 IHOP
- 7 Jason's Deli
- 8 Papacito's Cantina
- 9 Dickey's BBQ
- 10 Golden Corral
- 11 Olive Garden
- 12 Logan's Roadhouse
- 13 Cheddars
- 14 FreeBirds
- 15 Ghengis Grill
- 16 Chex Nous
- 17 Sonic
- 18 Brooklyn Pizzeria
- 19 Whataburger
- 20 Waffle House
- 21 Fox's Pizza Den
- 22 Burger King
- 23 Dolphin Restaurant



## Hotels

- 24 Country Inn & Suites
- 25 Fairfield Inn & Suites
- 26 Hampton Inn & Suites
- 27 Best Western
- 28 Sleep Inn & Suites
- 29 Baymont Inn & Suites
- 30 Holiday Inn Express
- 31 La Quinta
- 32 Holiday Inn
- 33 Ramada
- 34 Days Inn
- 35 Regency Inn & Suites



## Services

- 36 Valero
- 37 Exxon
- 38 Texaco
- 39 Shell
- 40 Shamrock
- 41 Service King
- 42 Star Cleaners
- 43 Planet Fitness
- 44 George Bush Intercontinental Airport
- 45 Sunoco



## Restaurants

- Casa Ole
- Chick-fil-A
- Chipotle
- Great Wraps Grill
- Marble Slab
- Sarku Japan



## Retail

- Dillard's
- JCPenny
- Macy's
- Sears





**ON RAMP**  
FM. 1960

**PARC AIR 59**

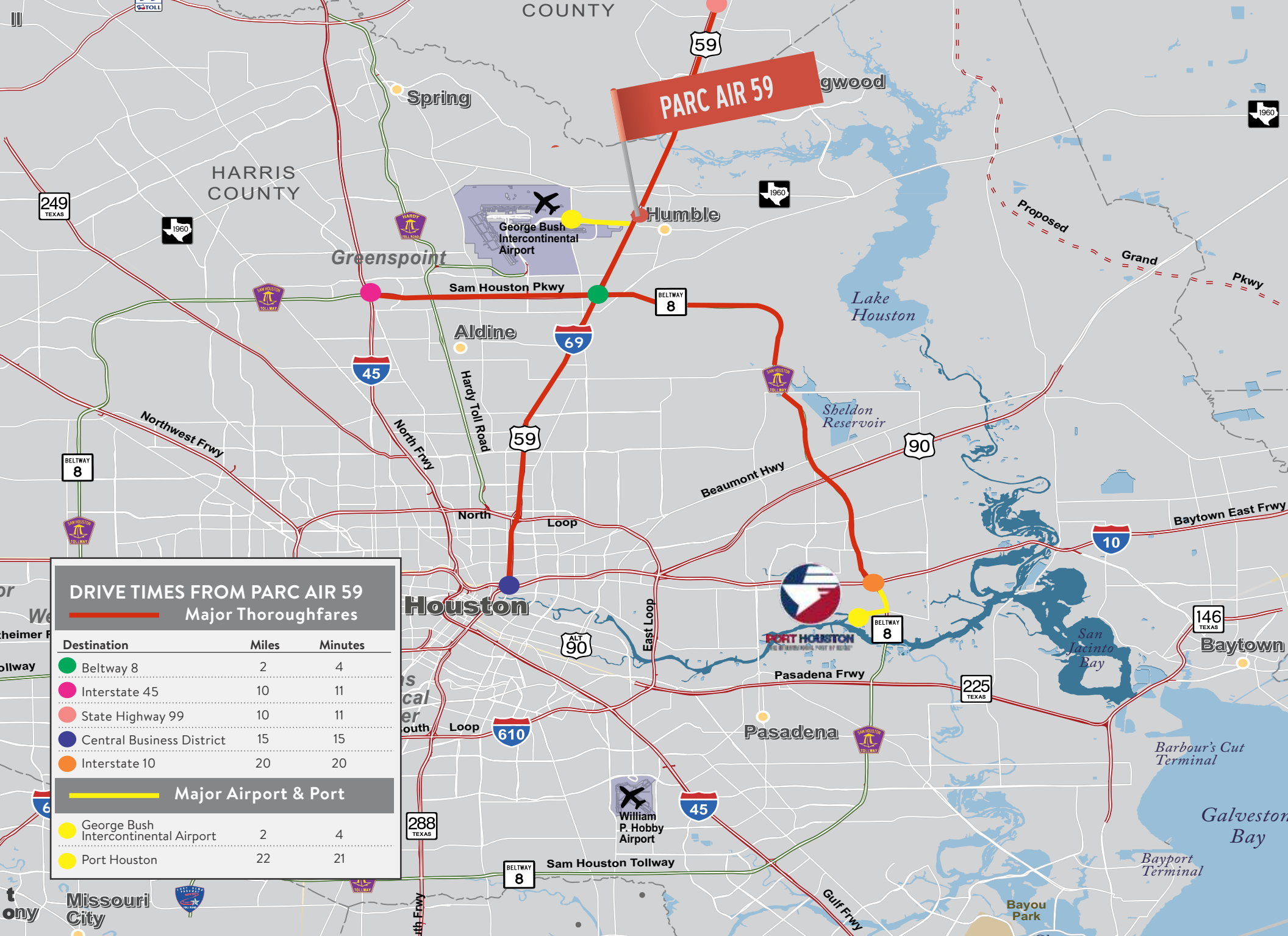
**ON RAMP**  
SH 59 | Interstate 69

**EXIT**  
Will Clayton Pkwy.

**EXIT**  
FM 1960

**ON RAMP**  
Will Clayton Pkwy

**Will Clayton Pkwy**





For Information Contact:



ALLISON BERGMANN  
allison.bergmann@cushwake.com  
713.963.2865

BEAU KALEEL  
beau.kaleel@cushwake.com  
713.963.2844

Developed by:



URBAN INDUSTRIAL

*by Jackson Shaw*