

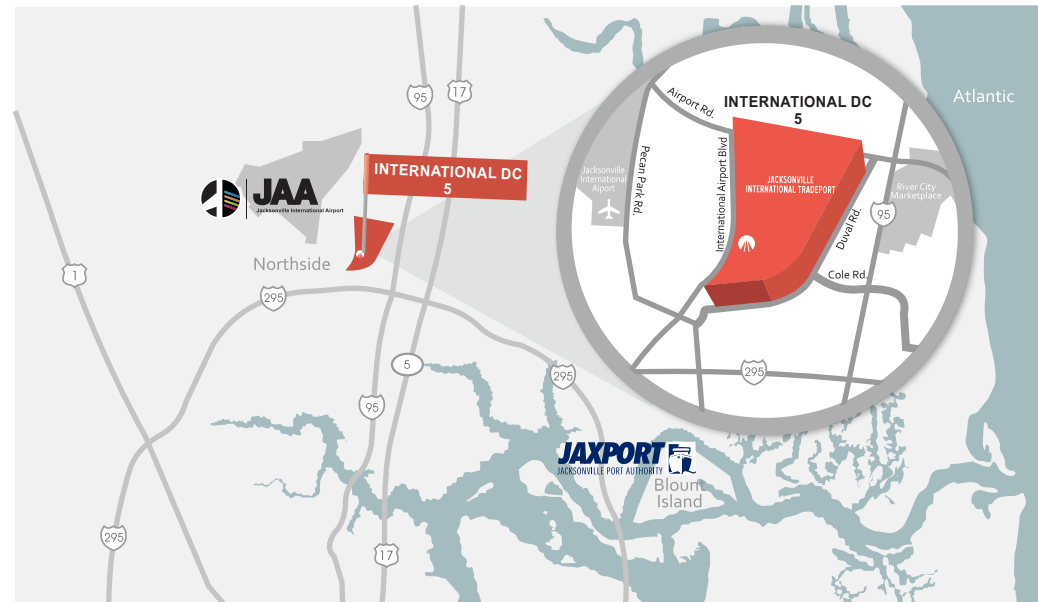
JACKSONSHAW



INTERNATIONAL DC 5

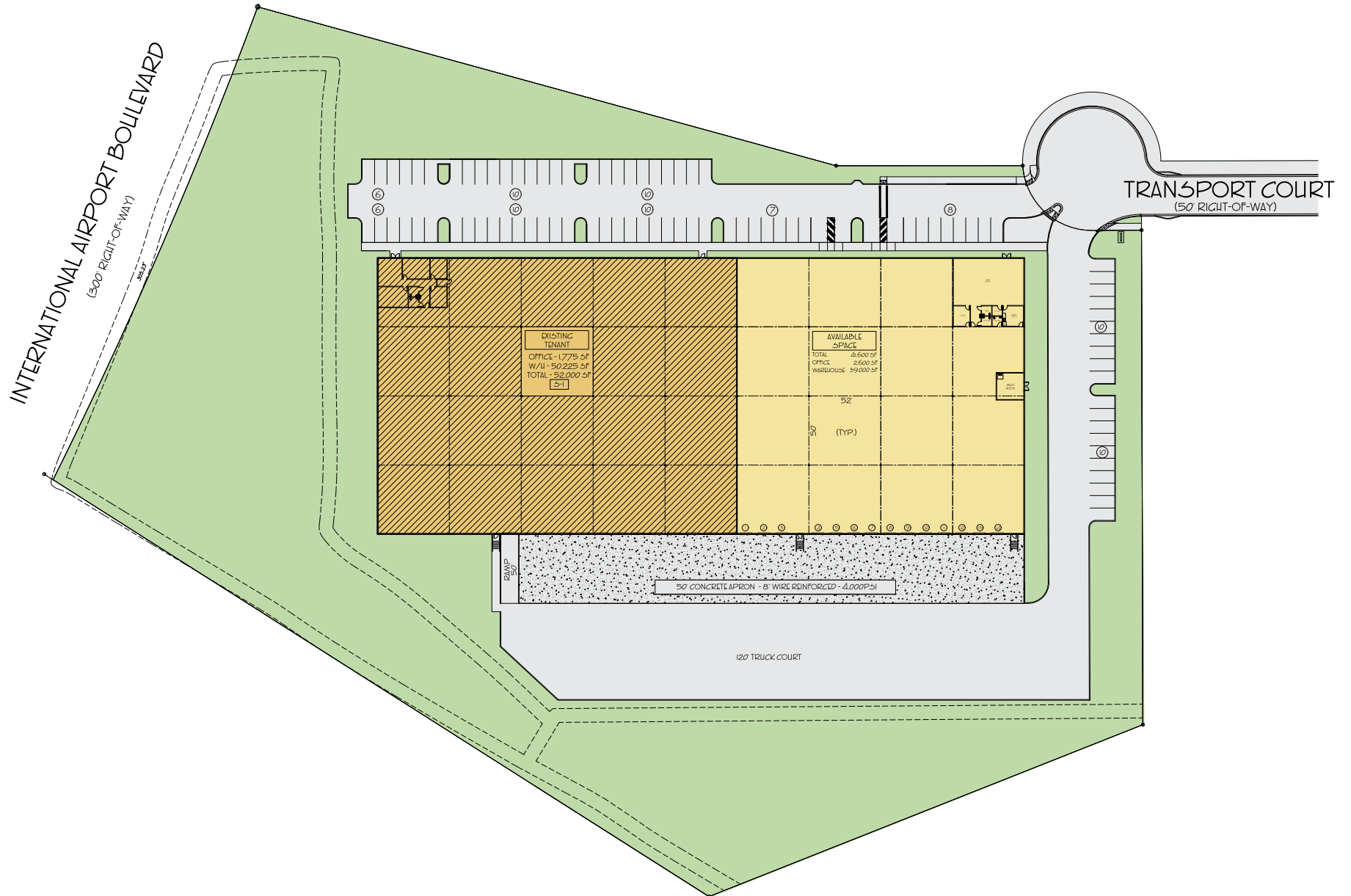
JACKSONVILLE INTERNATIONAL TRADEPORT
1594 TRANSPORT CT. | JACKSONVILLE, FLORIDA

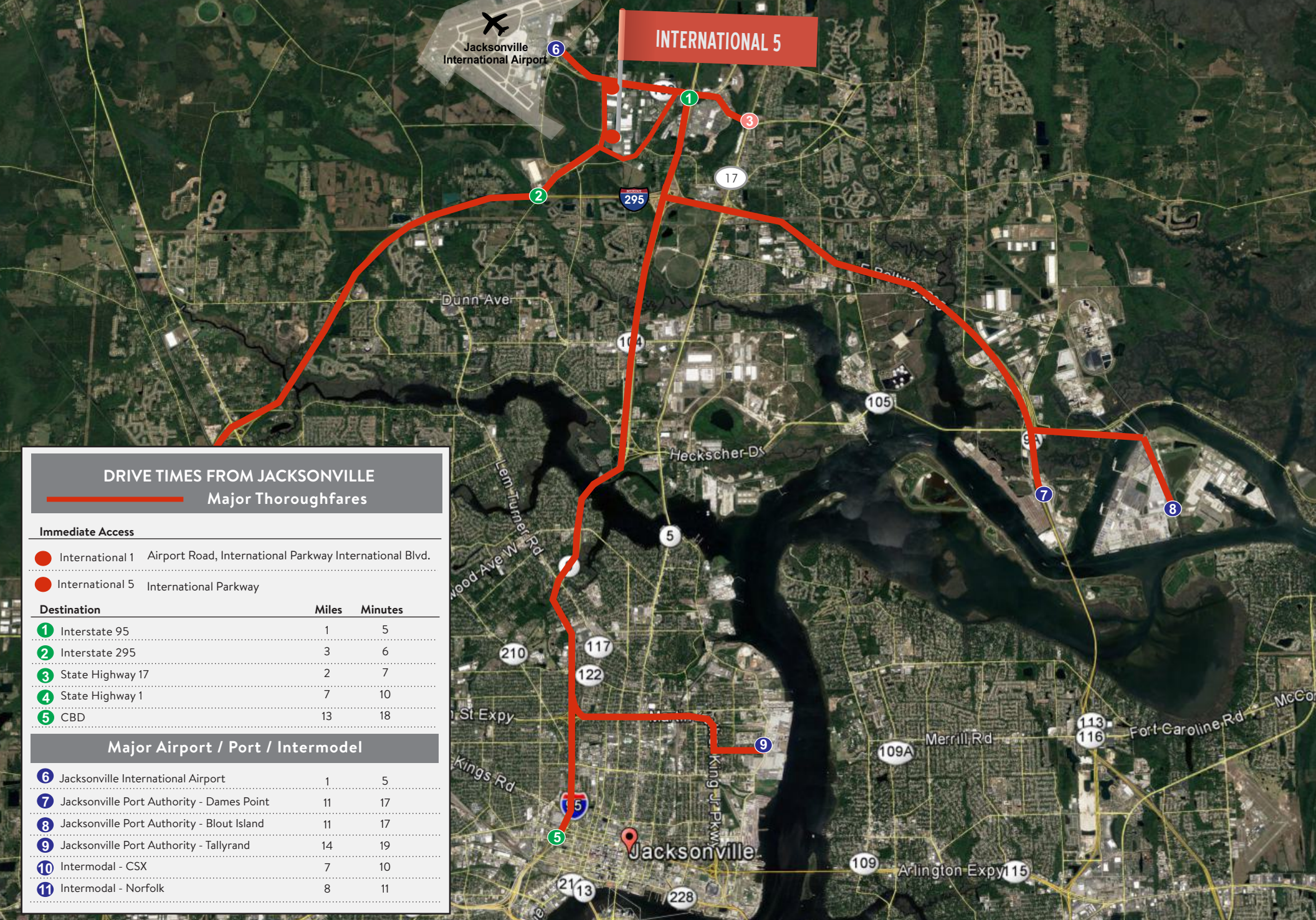
| | |
|--------------------------------|--------------|
| BUILDING SIZE: | 93,600 SF |
| AVAILABLE SQUARE FEET: | 41,600 SF |
| AVAILABLE OFFICE SPACE: | 2,600 SF |
| BUILDING CONFIG.: | Rear Load |
| DIMENSIONS: | 468' / 200' |
| CLEAR HEIGHT: | 28' |
| TYPICAL BAY: | 52' X 50' |
| TRUCK COURT: | 120' |
| DOCK HIGH DOORS: | 14 |
| DRIVE-IN DOORS: | Can Be Added |
| CAR PARKING: | 87 |
| FIRE PROTECTION: | ESFR |
| MANAGEMENT: | On-Site |



TYLER NEWMAN
(904) 380-8336
tyler.newman@cushwake.com

JACOB HORSLEY
(904) 380-8335
jacob.horsley@cushwake.com





DRIVE TIMES FROM JACKSONVILLE
Major Thoroughfares

Immediate Access

- International 1 Airport Road, International Parkway International Blvd.
- International 5 International Parkway

| Destination | Miles | Minutes |
|---|-------|---------|
| 1 Interstate 95 | 1 | 5 |
| 2 Interstate 295 | 3 | 6 |
| 3 State Highway 17 | 2 | 7 |
| 4 State Highway 1 | 7 | 10 |
| 5 CBD | 13 | 18 |

Major Airport / Port / Intermodal

| | | |
|--|----|----|
| 6 Jacksonville International Airport | 1 | 5 |
| 7 Jacksonville Port Authority - Dames Point | 11 | 17 |
| 8 Jacksonville Port Authority - Blout Island | 11 | 17 |
| 9 Jacksonville Port Authority - Tallyrand | 14 | 19 |
| 10 Intermodal - CSX | 7 | 10 |
| 11 Intermodal - Norfolk | 8 | 11 |



TYLER NEWMAN
(904) 380-8336
tyler.newman@cushwake.com

JACOB HORSLEY
(904) 380-8335
jacob.horsley@cushwake.com



INTERNATIONAL DC 5

**Jacksonville
International Tradeport**



Retail

- 1 
- 2 
- 3 
- 4 
- 5 
- 6 
- 7 
- 8 
- 9 
- 10 
- 11 
- 12 

Hotels

- 14 
- 15 
- 16 
- 17 
- 18 
- 19 
- 20 
- 21 
- 22 
- 23 
- 24 
- 25 
- 26 

Restaurants

- 27 
- 28 
- 29 
- 30 
- 31 
- 32 
- 33 
- 34 
- 35 
- 36 
- 37 
- 38 
- 39 
- 40 
- 41 
- 42 
- 43 
- 44 
- 45 
- 46 
- 47 
- 48 
- 49 
- 50 
- 51 
- 52 
- 53 
- 54 
- 55 

INTERNATIONAL DC 5 at Jacksonville International Tradeport offers a tremendous location designed to attract corporate users seeking the kind of environment employees and customers demand today.

No other business park in Northeast Florida is as known for its outstanding location, amenities, infrastructure and access to talent as INTERNATIONAL DC 5 at Jacksonville International Tradeport.

