

JACKSONSHAW

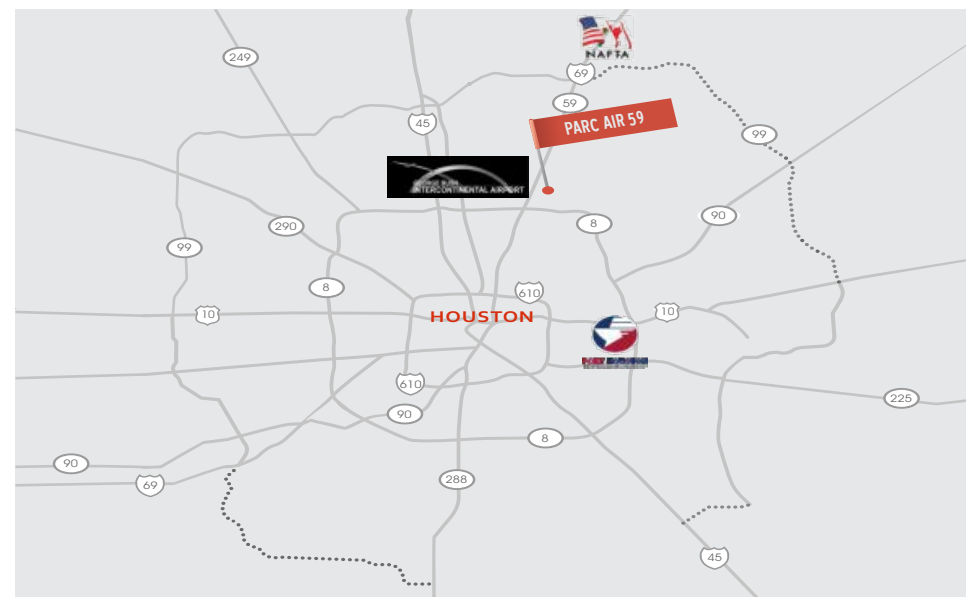


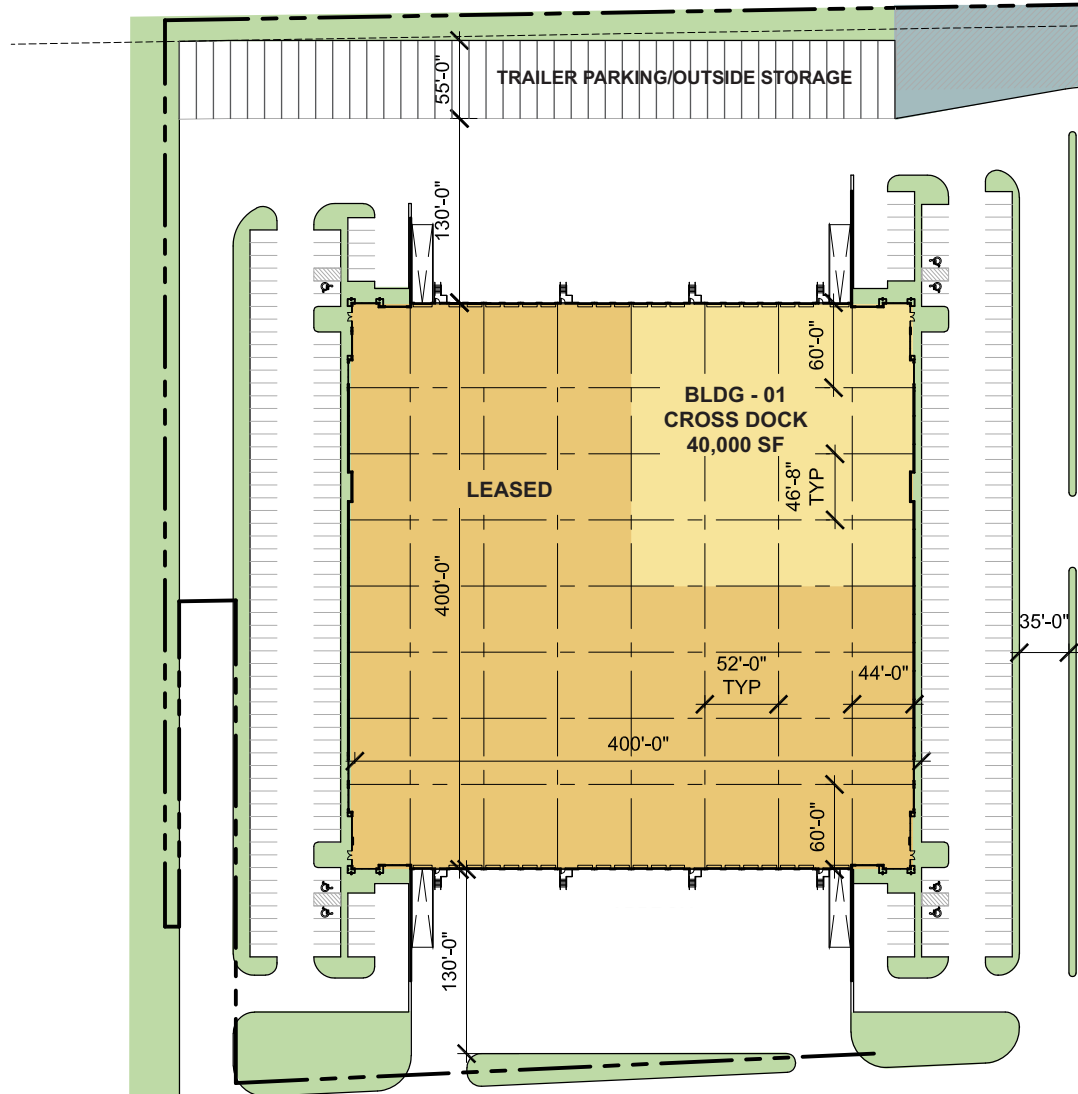
PARC AIR 59

BUILDING 1

18870 Eastex Freeway 59 | Humble, TX

SQUARE FEET:	160,000	PARKING SPACES:	59
AVAILABLE SQUARE FEET:	40,000	TRUCK COURT:	130' / 185'
MINIMUM DIVISIBLE:	40,000	DOCK DOORS:	9
BLDG. DEPTH:	400'	TRAILER PARKING:	21
CLEAR HEIGHT:	32'	SPRINKLER SYSTEM:	ESFR
TYPICAL BAY:	52' x 46' 8"	CONFIGURATION:	Cross Dock
DRIVE-IN DOORS:	1		





FOR LEASING INFORMATION

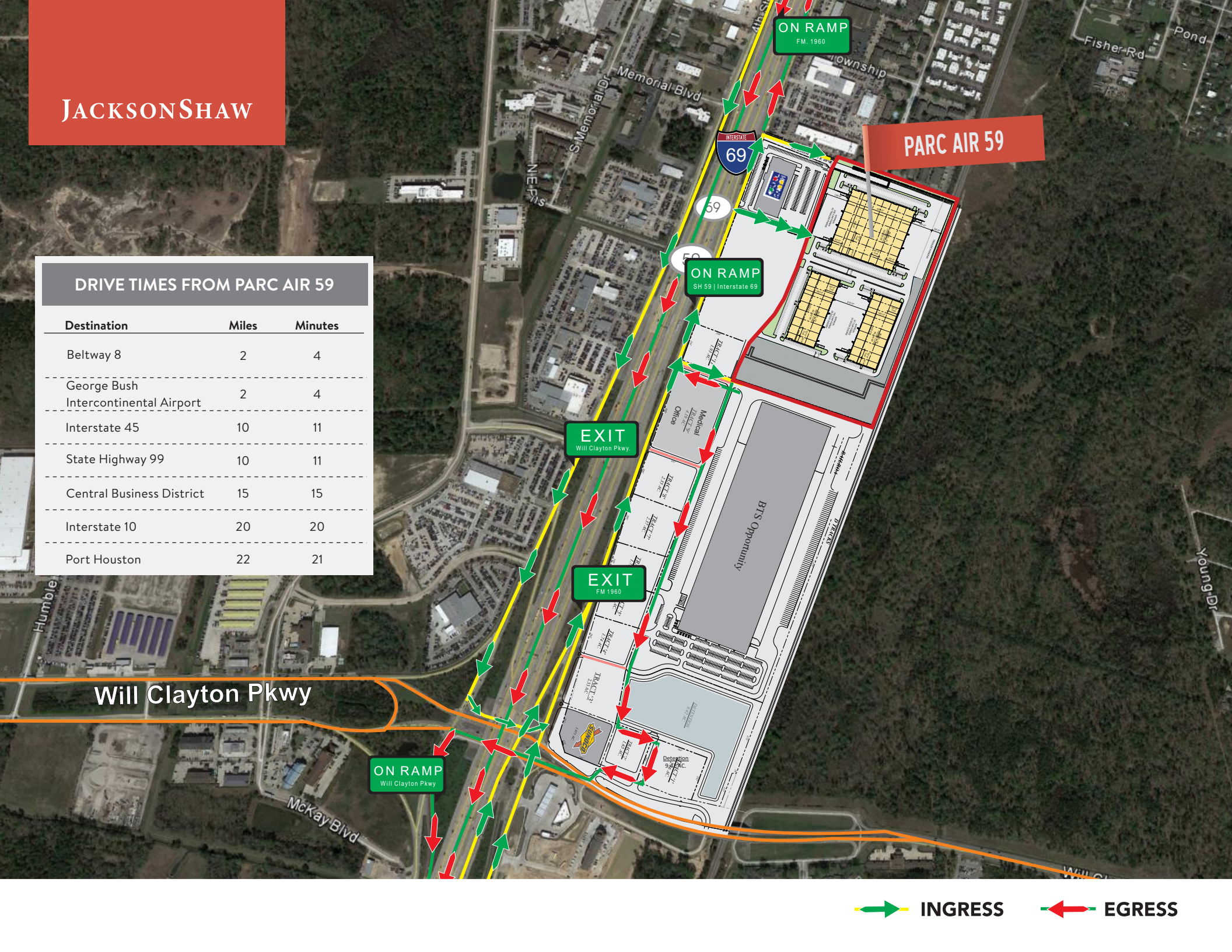


ALLISON BERGMANN
allison.bergmann@cushwake.com
713 963 2865

BEAU KALEEL
beau.kaleel@cushwake.com
713 963 2844

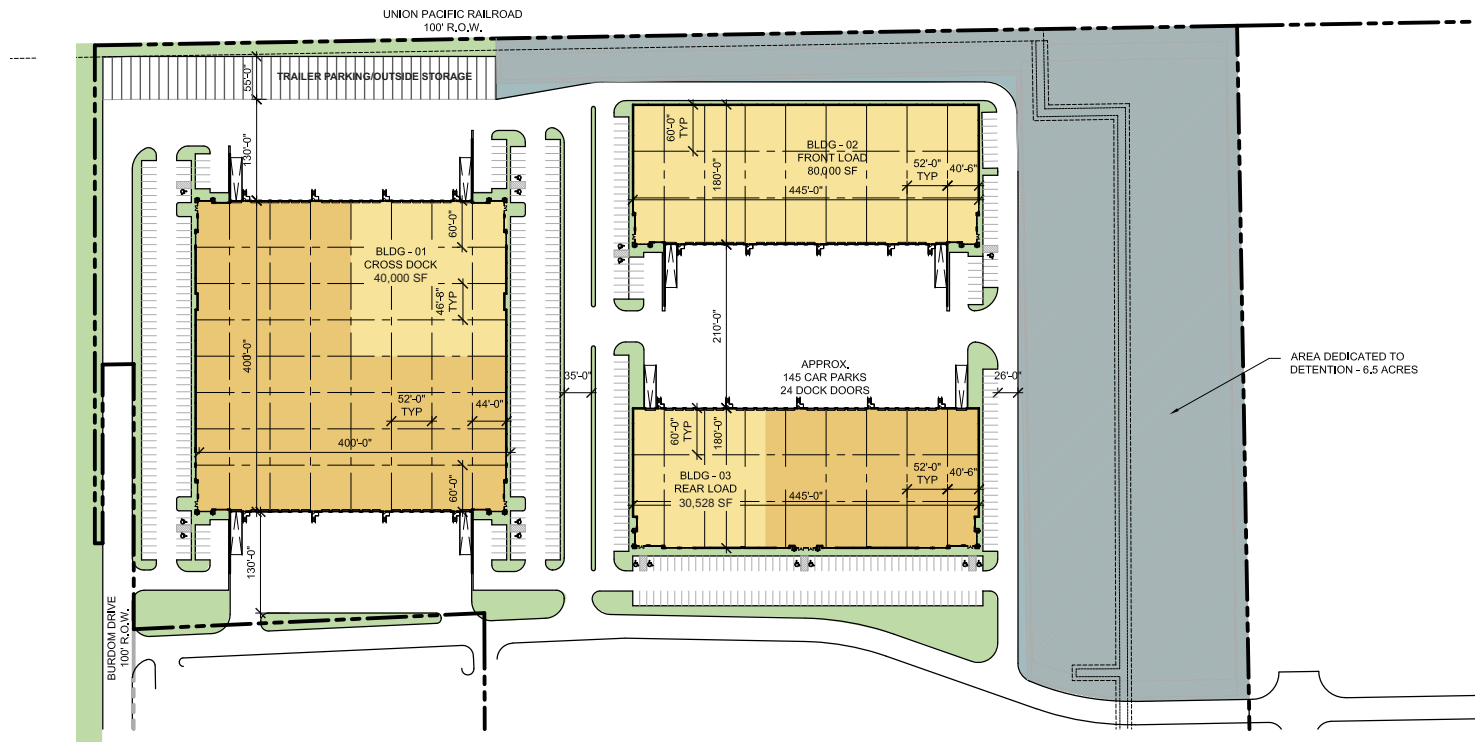
DRIVE TIMES FROM PARC AIR 59

Destination	Miles	Minutes
Beltway 8	2	4
George Bush Intercontinental Airport	2	4
Interstate 45	10	11
State Highway 99	10	11
Central Business District	15	15
Interstate 10	20	20
Port Houston	22	21



Will Clayton Pkwy

➔ INGRESS ➜ EGRESS



PARC AIR 59	BLDG. 1	BLDG. 2	BLDG. 3	TOTAL
BUILDING SIZE:	160,000 SF	80,000 SF	80,000 SF	320,000 SF
AVAILABLE SQUARE FEET:	40,000 SF	80,000 SF	30,528 SF	150,528 SF
BUILDING CONFIG:	Cross Dock	Front Load	Rear Load	
DIMENSIONS:	400' long x 400' deep	445' long x 180' deep	445' long x 180' deep	
CLEAR HEIGHT:	32'	28'	28'	
FIRE PROTECTION:	ESFR	ESFR	ESFR	
TRUCK COURT:	130'/185'	210' (shared)	210' (shared)	
DOCK DOORS:	9	21	9	
DRIVE-IN DOORS:	1	2	1	
PARKING SPACES:	59	57	78	
TRAILER PARKING:	21	0	0	

FOR LEASING INFORMATION



ALLISON BERGMANN
 allison.bergmann@cushwake.com
 713 963 2865

BEAU KALEEL
 beau.kaleel@cushwake.com
 713 963 2844

George Bush International Airport



44

- 23
- 31
- 22
- 32
- 33

- 18
- 15
- 14
- 13
- 12
- 11

- 30
- 21
- 20
- 27
- 28
- 39
- 45
- 19

38

- 34
- 7
- 6
- 36
- 42
- 37

PARC AIR 59



59

35

46

- 8
- 2
- 3
- 4

- 24
- 25
- 26

1

41

5

17

16

Isaac

Will Clayton Pkwy

N Houston Ave

S Houston Ave

Townsen Blvd W

Townsen Blvd

Eastex Freeway Serv Rd
N Bender

4th St

Kenswick Dr



Restaurants

- 1 Red Lobster
- 2 Chili's
- 3 Souper Salad
- 4 The Curry House
- 5 Domino's Pizza
- 6 IHOP
- 7 Jason's Deli
- 8 Papacito's Cantina
- 9 Dickey's BBQ
- 10 Golden Corral
- 11 Olive Garden
- 12 Logan's Roadhouse
- 13 Cheddars
- 14 FreeBirds
- 15 Ghengis Grill
- 16 Chex Nous
- 17 Sonic
- 18 Brooklyn Pizzeria
- 19 Whataburger
- 20 Waffle House
- 21 Fox's Pizza Den
- 22 Burger King
- 23 Dolphin Restaurant



Hotels

- 24 Country Inn & Suites
- 25 Fairfield Inn & Suites
- 26 Hampton Inn & Suites
- 27 Best Western
- 28 Sleep Inn & Suites
- 29 Baymont Inn & Suites
- 30 Holiday Inn Express
- 31 La Quinta
- 32 Holiday Inn
- 33 Ramada
- 34 Days Inn
- 35 Regency Inn & Suites



Services

- 36 Valero
- 37 Exxon
- 38 Texaco
- 39 Shell
- 40 Shamrock
- 41 Service King
- 42 Star Cleaners
- 43 Planet Fitness
- 44 George Bush Intercontinental Airport
- 45 Sunoco



Restaurants

- Casa Ole
- Chick-fil-A
- Chipotle
- Great Wraps Grill
- Marble Slab
- Sarku Japan



Retail

- Dillard's
- JCPenny
- Macy's
- Sears



FOR LEASING INFORMATION



ALLISON BERGMANN
 allison.bergmann@cushwake.com
 713 963 2865

BEAU KALEEL
 beau.kaleel@cushwake.com
 713 963 2844