

JACKSONSHAW



element

BY WESTIN





OVERVIEW

The new Element at SkySong will be a 157 room, 5-story, 99,103 square foot distinctive upscale extended stay hotel located in Scottsdale, Arizona and will be part of the larger 1.2 million square foot mixed-use campus, SkySong. SkySong features Class-A commercial office space, Arizona State University's SkySong incubator campus, restaurants and exceptional multi-family. It is home to both start-ups and Fortune 500 companies.

Providing a much needed hospitality "Element" to SkySong, the proposed Element SkySong hotel will be a part of the Marriott Distinctive Brands portfolio, a unique hospitality destination to the Scottsdale market.

// Guest Room Amenities

- Large Rooms / 2 Communal Rooms
- Heavenly Bed
- Sofa Bed
- Oversized Windows for natural light
- Fully Equipped Kitchens
- Flexible Workspace
- HDTV Portable Device Connections
- Free Wi-Fi
- Smoke Free

// Public Area and Amenities

- Business Center
- Complimentary Breakfast Bar
- Relax - Complimentary Evening Reception
- Active Lounge
- 24/7 Grab-n-go Pantry
- Patio Grill with outside meeting room space
- Natural Saline Pool
- Fitness Center
- Bikes to Borrow
- Free Wifi
- 24/7 Guest Laundry
- Covered Parking Garage



MARRIOTT BRAND

Element Hotels

Extended Stay Reimagined

Space To Live Your Life

Element Hotels offers the essentials of balanced travel for today's standard and longer-stay traveler who does not want to compromise comfort and design. Element Hotels is grounded in smart, environmentally friendly thinking, from its products, services and programs to its physical spaces with flowing, multipurpose areas that maximize space. Its vibrant, optimistic energy is contagious and has developers signing on and guests eagerly approving with soaring satisfaction scores.



element[™]
BY WESTIN

Global Distribution:

86 // Element Hotels Globally

13,027 // Open Rooms

Natural light. Open spaces. Healthy options.

Discover Element Hotels—perfect for the traveler who is visiting for a few days or a few weeks. Inspired by Westin, Element provides guests with space to live their lives. From spacious guestrooms featuring fully-equipped kitchens, spa-inspired bathrooms and the Signature Heavenly® Bed to sustainable design and eco-friendly practices, we've built a smarter, better place to stay. Element is grounded by smart thinking, a natural sense of balance and an optimistic energy that's alive and vibrant, all of which is reflected in our programs, services and communications.

our guests

Live balanced, healthy,
active lifestyles

Want to live life away
as they do at home

Socially/environmentally aware

Balance style & design with
comfort & performance



DESIGN & INSPIRATION

Element is inspired by the design and positioning of Westin. Element balance comes through in smart and sustainable design. Guests can enjoy a modern design and green choices while not compromising a great experience whether they are staying for one night or for a few nights.



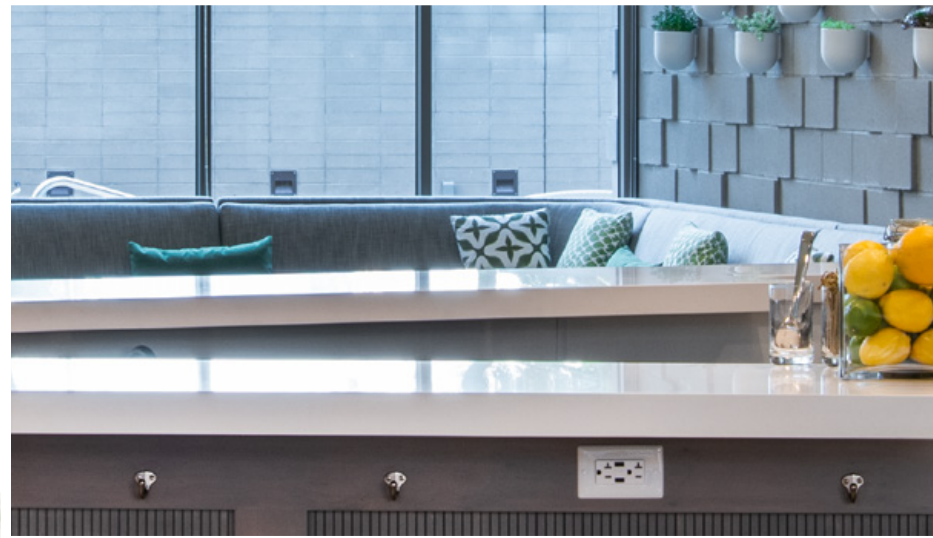
GUEST ROOM EXPERIENCE

Rest and rejuvenate in the signature Heavenly® Bed, with lofty duvets and pillows. Get organized with custom designed, oversized closets. Stay entertained with a flat-screen HDTV, Movies On Demand and enhanced channel lineup. Fully equipped kitchens, spa-inspired bathrooms and flexible workspaces give guests the tools and features they need to live their lives.



EAT WELL

From quick bites to fresh ingredients, energy boosts to sweet indulgences, Element offers better choices. Our Restore pantry is fully stocked, 24/7, and fully equipped in-room kitchens make every guest an instant gourmet. Our complimentary Rise breakfasts and Relax evening receptions differentiate us from others. These offerings are healthier, more sophisticated options, encouraging guests to start their mornings and end their days as they wish, comfortably and satisfied.



OPEN UP

An open, uninterrupted layout allows guests to move freely from one space to another, whether they're starting their day with our Rise breakfasts, working, playing, reflecting in the living area, or unwinding at our Relax evening receptions.



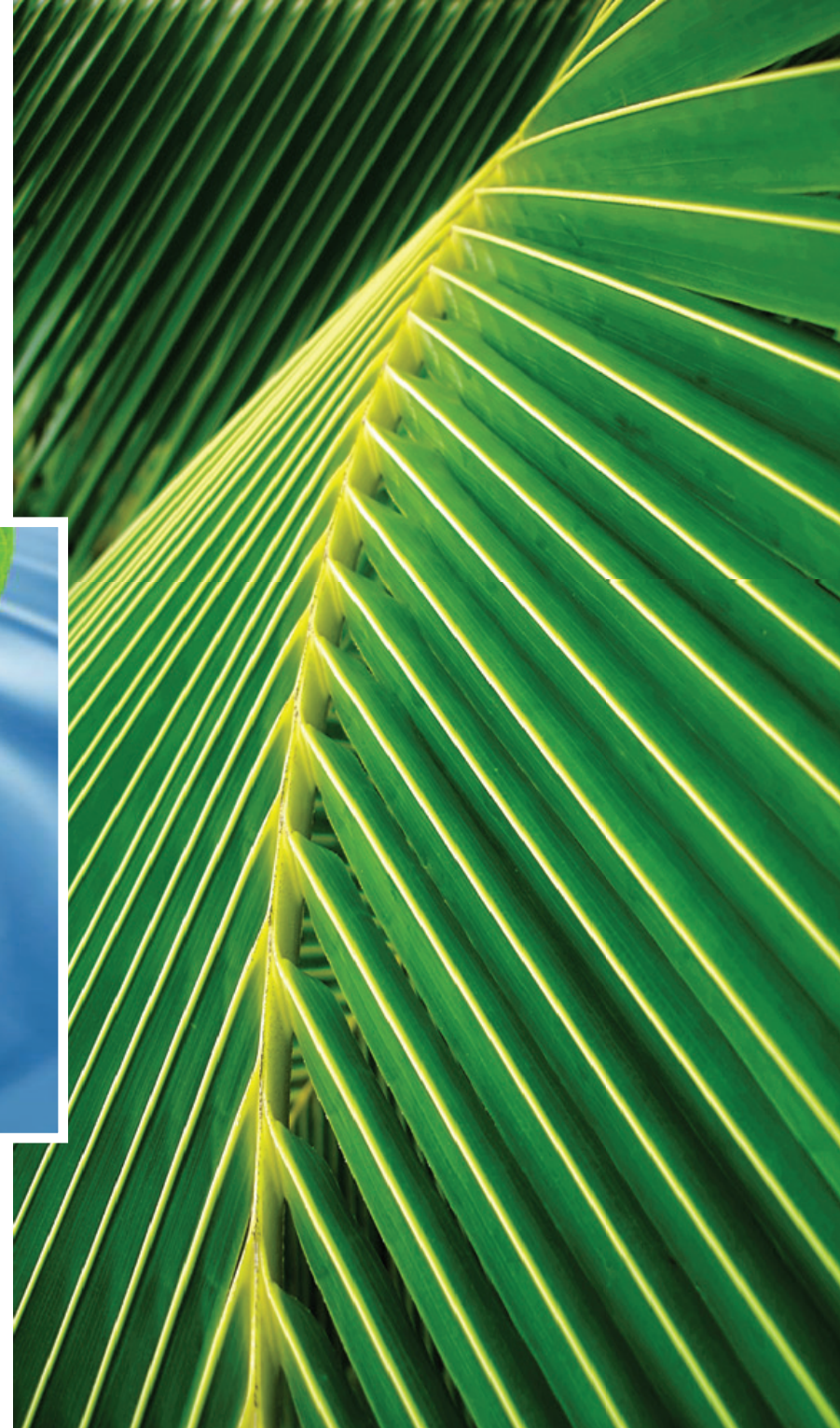
GET MOVING

Feel energized with fitness options designed for the active traveler. Stretch and strengthen in our spacious state-of-the-art facility Motion and enjoy a refreshing dip in our all natural saline pool. Another option is to take your workout outdoors and explore the neighborhood with an invigorating run, long hike or bike ride.

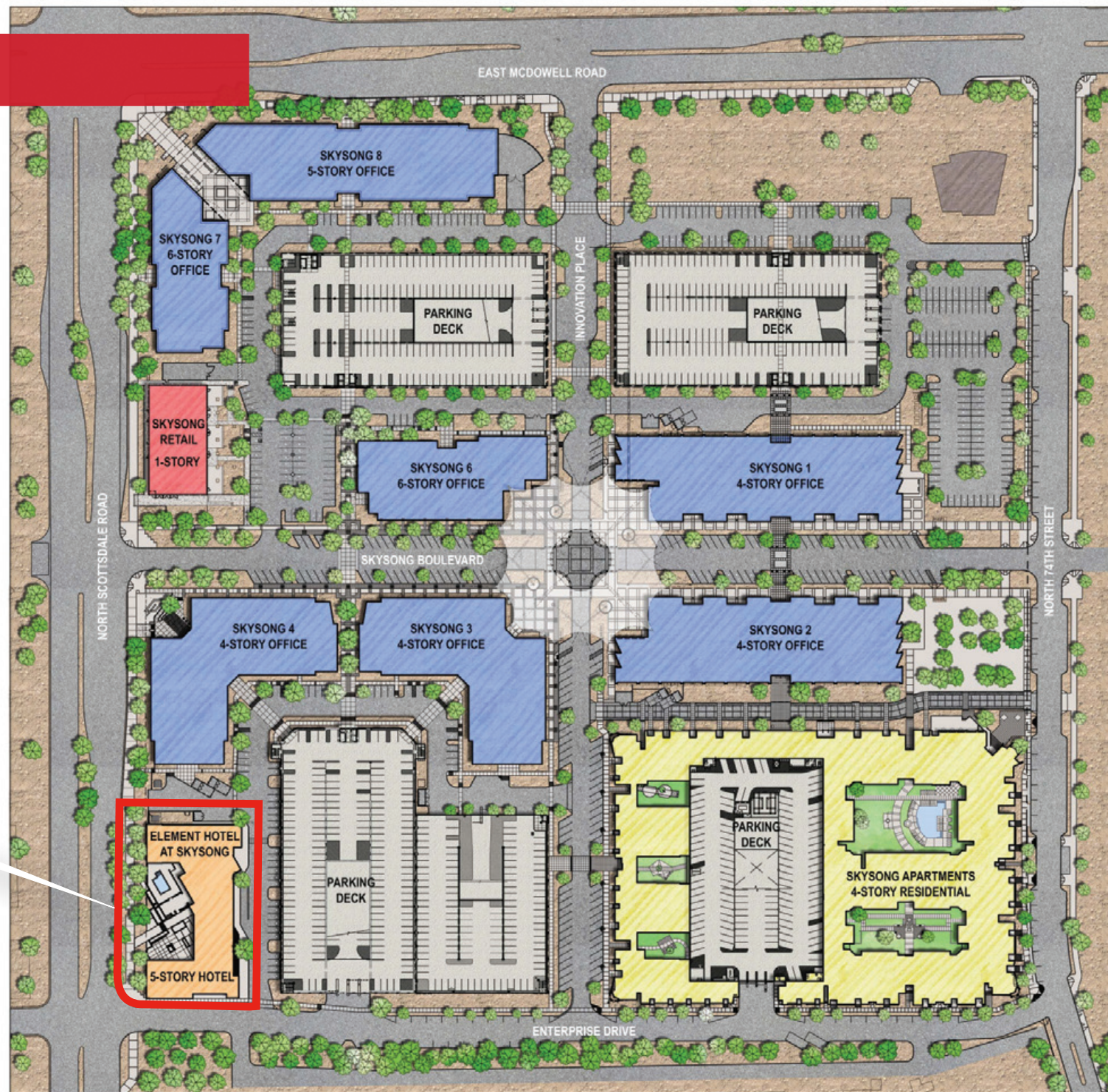


GREEN FROM THE GROUND UP

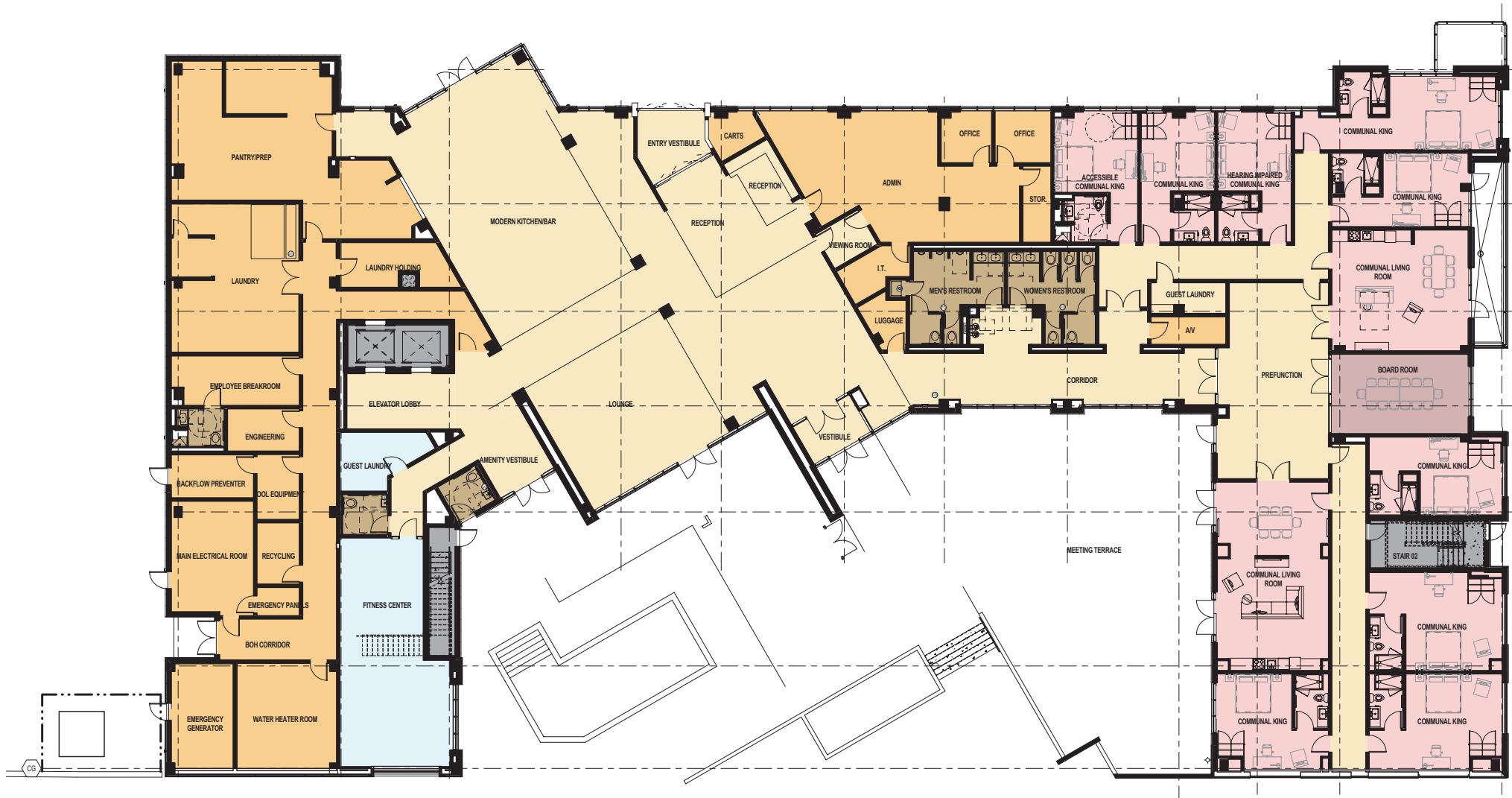
Improving hotel air quality. Minimizing pollutants and chemicals. Ample access to natural light. From sustainable design to eco-friendly practices and programs, Element is a smarter, better place to stay. Element hotels comply with the mandates of high performance green buildings, resulting in a cleaner, healthier place for both guests and associates and a more sustainable environment for the earth.



MASTER PLAN



SITE PLAN







DEVELOPED & OWNED BY

JACKSONSHAW